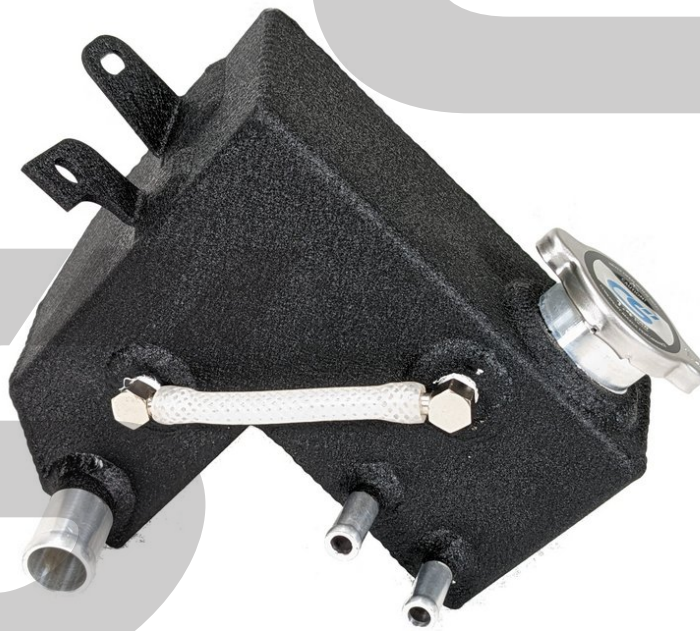


CorkSport Performance

AXE-6-831 Gen1 Mazdaspeed3 Aluminum Coolant Tank

Gen1 Mazdaspeed3 Coolant Tank

Written By: Quintin Gunn



 **TOOLS:**

- Socket 8mm (1)
- Socket, 10mm (1)
- Flathead Screwdriver (1)
- Pliers (1)
- Bucket or Large Container (1)
- Shop Towels/Rags (1)
- Engine Coolant (1)

Step 1 — Getting Started



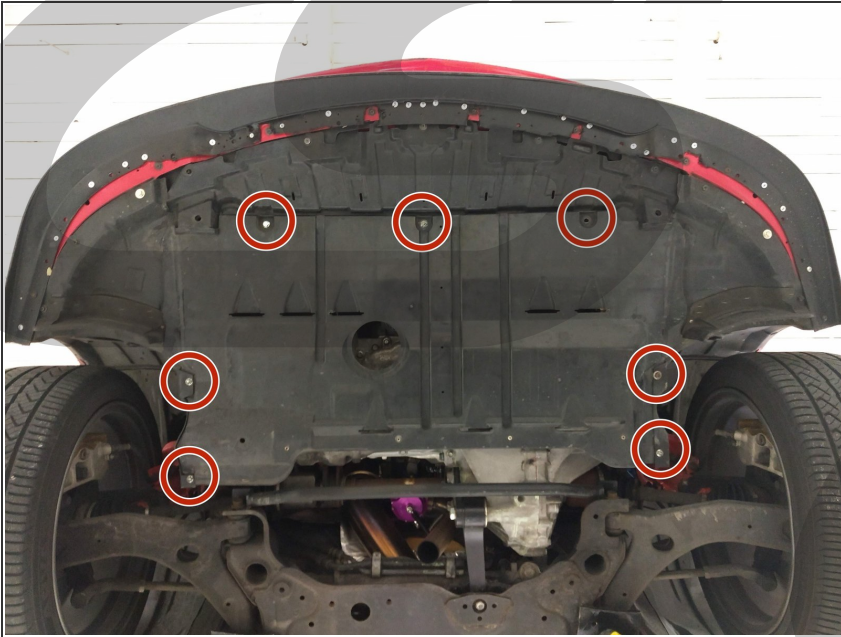
- First and foremost; THANK YOU for becoming a part of the CorkSport Family. We hope to bring you the highest level of Parts, Customer Service, & Support
- ⓘ How To Use These Instructions
 - The instruction format will relate colored marking in the image to the color dot in the text to the right of the image

Step 2 — Lift and Support the Front End of the Car



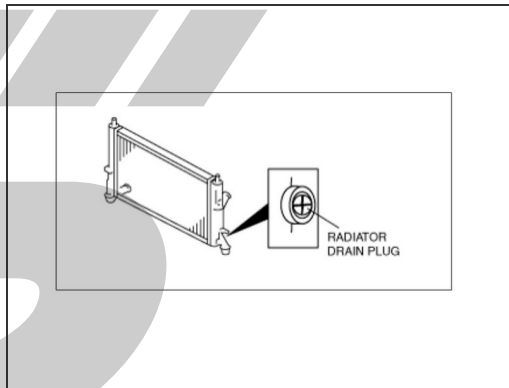
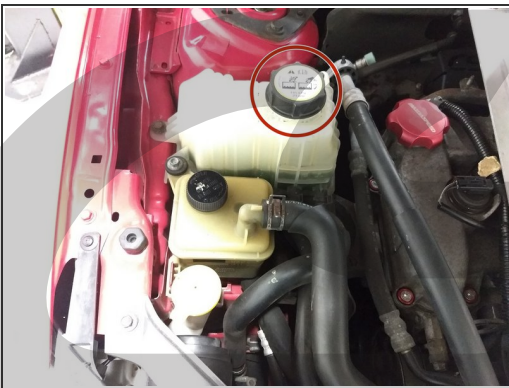
- Ensure your car is parked on a level surface
- Using a floor jack and jackstands (or a lift), lift and support the front end of the vehicle
- ⚠ Always refer to the floor jack and jackstand manufacturers instructions as well as the factory owners manual for your vehicle to determine jacking points and support points. Alternately, use an automotive lift to gain access to the underside of the vehicle. Redundant support mechanisms are recommended.

Step 3 — Remove the Engine Undertray



- Using a **10mm Socket and Ratchet**, remove the **Seven (7) bolts** securing the undertray to the vehicle
- Remove the Undertray from the vehicle

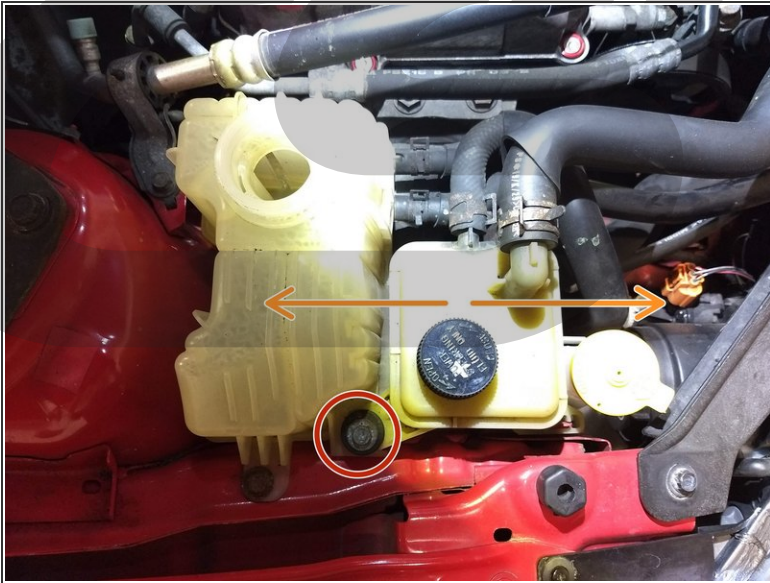
Step 4 — Drain Coolant until Reservoir is empty



⚠ Ensure that the engine is completely cool before continuing

- Remove the Cap from the OEM Coolant Reservoir
- Locate the Radiator drain plug and place a clean container underneath it to catch the drained coolant
 - Loosen the Radiator drain plug
 - Drain until the OEM Coolant Reservoir is empty

Step 5 — Move the OEM Power Steering Fluid Reservoir



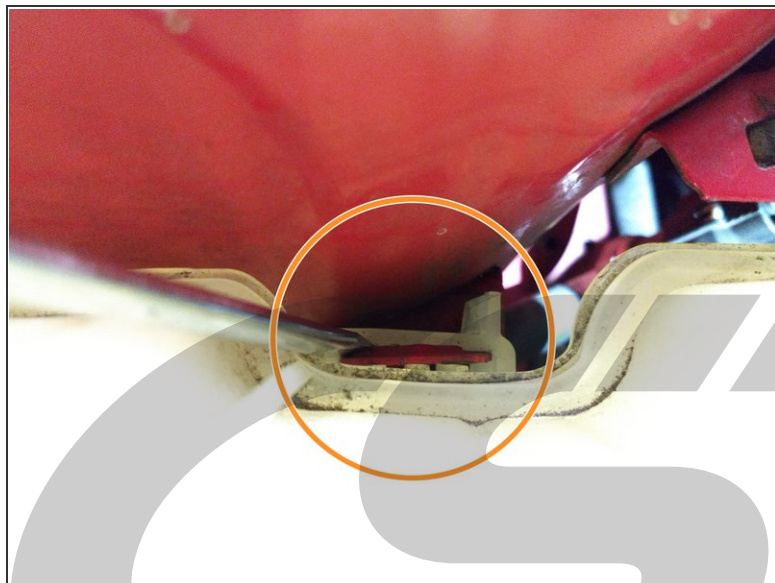
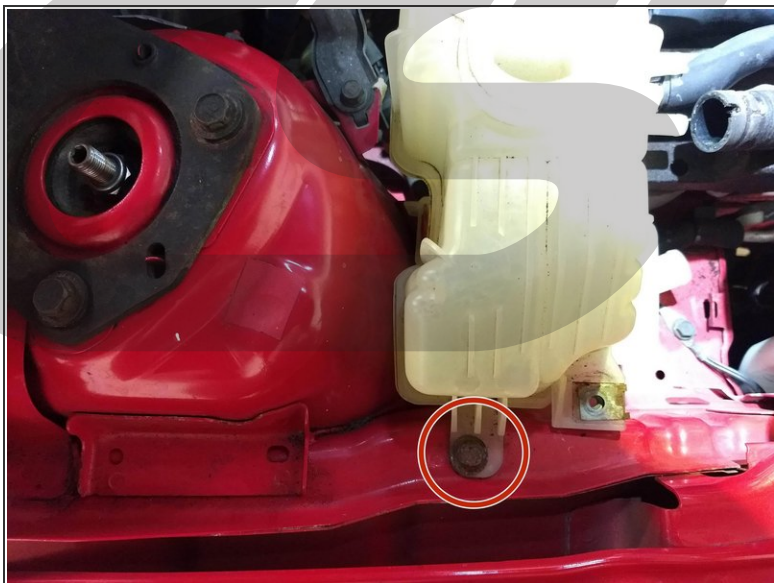
- With a **10mm Socket and Ratchet**, remove the **10mm bolt** securing the Power Steering Fluid Reservoir to the OEM Coolant Tank
- Rock the Power Steering Fluid Reservoir forward and backward while pulling upward until it is free from its mounting location
- Secure the Power Steering fluid Reservoir out of the way to gain access to all Coolant Hoses
- ⓘ If you are also installing the CorkSport Aluminum Power Steering Fluid Reservoir, please refer to its separate installation guide

Step 6 — Remove the OEM Coolant Tank - Part 1



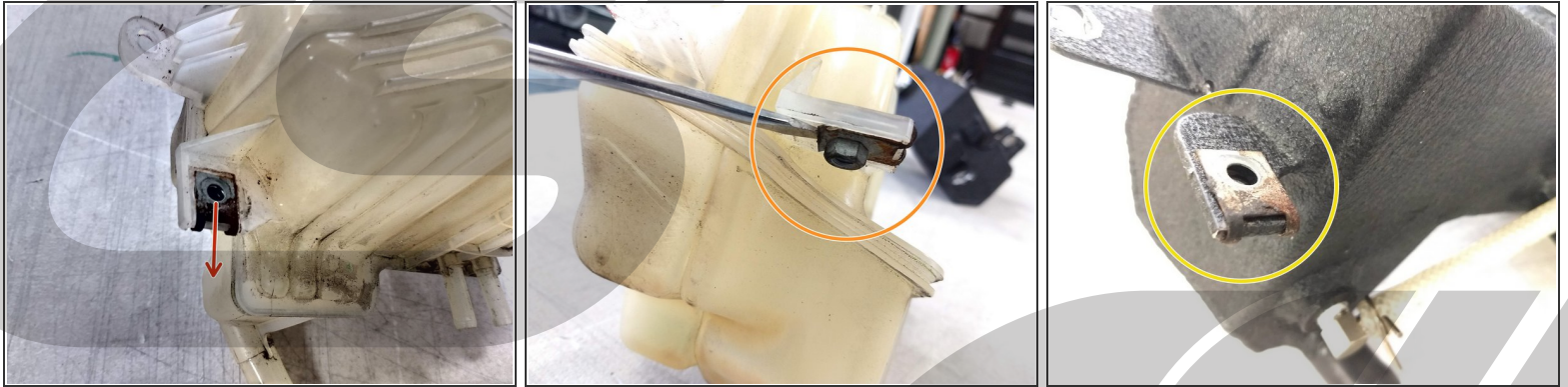
- With a pair of **Pliers**, grasp the hose clamps and move them **2 inches or more** away from the Coolant Tank
- Remove the Coolant Hoses from the Tank by **gently, but firmly**, pulling away from the tank
 - ⓘ Gently twisting while pulling helps break difficult hoses free
 - If hoses are extremely difficult to remove, a 90° Pick can be used to break up any debris seizing the hose to the tank
 - ⓘ Avoid excessive force to avoid stretching or tearing of the coolant hoses
 - ⓘ Immediately clean any spills if they occur

Step 7 — Remove the OEM Coolant Tank - Part 2



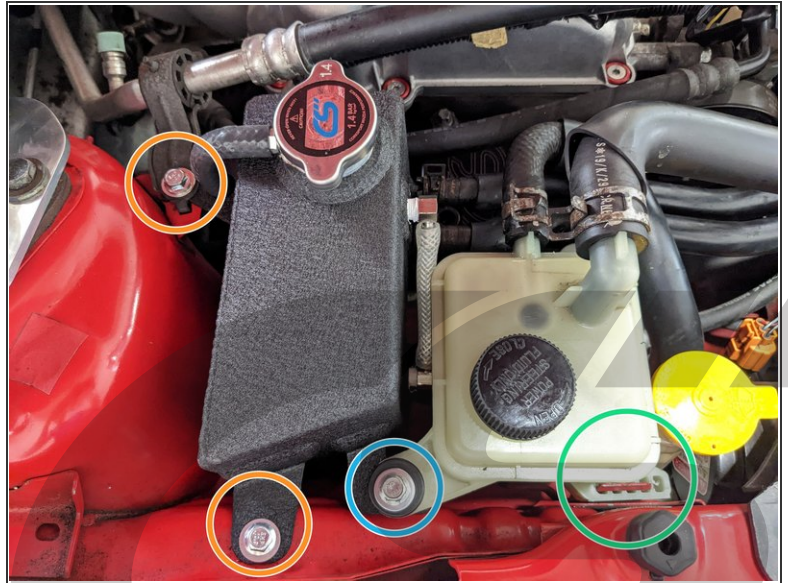
- With a 10mm Socket and Ratchet, remove the 10mm bolt securing the Coolant Tank to the Chassis
- With a flathead screwdriver, pry the rear-end of the Coolant Tank away from the tab
- While wiggling the Tank back-and-forth, pull upward on the Tank until it is free from its mounting tab
- Remove the OEM Coolant Tank from the vehicle

Step 8 — Prepare the CorkSport Aluminum Coolant Tank



- Remove the C-clip nut from the OEM Coolant Tank
- If the Clip-nut is difficult to remove, use a flathead screwdriver on the underside of the nut and pry it from the Tank
- Slide the Clip-nut onto the side-bracket of the CorkSport Coolant Tank as shown

Step 9 — Install the CorkSport Aluminum Coolant Tank and OEM Power Steering Reservoir



- With a 10mm Socket and Ratchet, remove the 10mm bolt securing the AC line to the Chassis, and rotate the bracket out of the way
- Align the CorkSport Coolant Tank with AC Bracket location and Original Chassis-mount location
- Replace the AC bracket to sit on top of the Rear Bracket of the Coolant Tank. Ensure the alignment tab returns to its resting hole
- With the provided **Two (2) 10mm Bolts and washers**, mount the CorkSport Coolant Tank to the Chassis as shown
- Reinstall the Coolant Lines and Hose Clamps
- ⓘ If you are also installing the CorkSport Aluminum Power Steering Fluid tank, please refer to its dedicated instruction manual
- Slide the OEM Power Steering Tank back onto its mounting tab. Push down until it clicks into place
- With the longer 10mm bolt and washer provided, secure the OEM Power Steering tank to the CorkSport Coolant Reservoir

Step 10 — Refill with Coolant



- Remove the Pressure Cap from the CorkSport Coolant Tank and insert a funnel
- If, and **only** if, the Coolant Drain Container used is clean and the coolant remained decontaminated, pour the drained coolant into the CorkSport Coolant Reservoir
- If the drained coolant became contaminated during the installation process, pour new coolant into the CorkSport Coolant Reservoir
 - Fill until the sight tube is ~3/4 full
- Replace the Pressure Cap

Step 11 — Bleed the Coolant System



- Start the Engine and let it warm up to operating temperature
- Once at operating temperature, hold the engine at **2500 rpm for 2-3mins**
- Hold the engine at **3000 rpm for 5 seconds**
- Idle and check for leaks
- Repeat the above process another time
- Check coolant level. If level is below 2/3 full, **wait until engine cools down** and refill to 3/4 full

⚠ You must wait until the engine is cool to remove the cap and refill the coolant. Failure to do so will result in burns and injury

Step 12 — Installation Complete



- This completes your installation of the CorkSport Aluminum Coolant Tank!
- Before you go for a drive, check for any leaks and make sure your engine temperature needle is in the middle of the gauge
- Go for a drive and keep an eye on your temperatures. If temperatures start to rise, repeat the bleeding process again
- Contact us with any questions or concerns at sales@corksport.com or (360) 260-2675.
- Share your experience using #CorkSport on Instagram, Facebook, and Twitter.