

CorkSport 2-Way Adjustable Rear Sway bar

2004-2013 Mazda 3 and 2012-2013 SkyActiv Mazda 3



Thank you for purchasing the CorkSport Mazda 3 Rear Adjustable Sway Bar. Our sway bar will help remove the vehicles tendency to overpower the front tires under hard cornering and minimize traction robbing body lean. The CorkSport Mazda 3 Rear Sway Bar adjustability allows you to fine tune the handling. We hope you enjoy your new part! Please let us know your feedback by submitting a review at: <http://corksport.com/corksport-mazda-3-rear-adjustable-swaybar.html>

Pre-Installation Notes:



Make sure your vehicle is on a level surface prior to starting installation.



These instructions were written for reference only and the use of a factory service manual is recommended. Please read these instructions thoroughly prior to starting installation.



How our instructions work: To best cover all of our customers experience levels, we have included a table of contents/order of operations along with step-by-step instructions.



These installation instructions were written using a 2013 Mazdaspeed3. Other year Mazda 3 and Mazdaspeed 3 models will be similar.

Materials and Time:



General Info.

Part #: Axl-3-070
Time Est: 45 min
Wrench Rating: 2/5



Tooling List

3/8 or 1/2" Ratchet
14mm Socket or box wrench
17mm Box wrench
5mm Allen wrench
3mm Allen wrench
Torque wrench
Grease



Parts List


One (1) CorkSport Rear Sway Bar
Two (2) Polyurethane Bushings Assemblies
Two (2) Sway Bar Collars
One (1) Grease Packet



Order of Operations & Table of Contents

 **Support Car on Jackstands**
Section 1: Jack Vehicle Up

Pg. 2

 **Disassembly and Removal**
Section 2: Remove the stock rear sway bar Continued

Pg. 2-3

 **Installation and Assembly**
Section 3: Install the CorkSport 2-way adjustable rear sway bar

Pg. 4-7

Detailed Instructions

1. Support Car on Floor Jack/Jackstands or Lift

- a) Verify that the vehicle is on a level and stable surface.
- b) Use a floor jack and jackstands to remove the passenger side front tire/wheel.



Always refer to the floor jack and jack stand manufactures instructions as well as the factory owners manual for your vehicle to determine jacking points and support points. Alternately, use an automotive lift to gain access to the underside of the vehicle.

2. Remove the stock rear sway bar

- a) Remove the four (4) rear subframe brace bolts (shown with red circles in Figure 2a). Use a ratcheting wrench and a 14mm socket.



The rear subframe brace is only installed on Mazda 3 cars from 2007-2009.

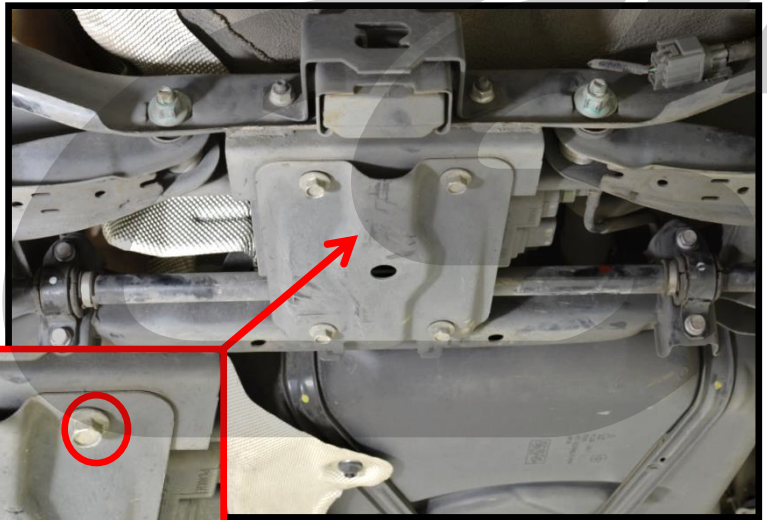


Figure 2a

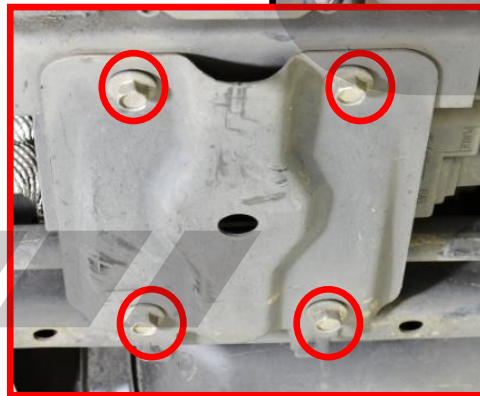


Figure 2b

- b) Remove the upper sway bar end link nuts using the 14mm box wrench and 5mm Allen wrench. Figure 2b shows the passenger's side end link.



2. Remove the stock rear sway bar Continued

c) Remove the lower sway bar end link nuts using the 17mm box wrench and 5mm Allen wrench. **Figure 2c** shows the passenger's side end link.

d) Remove the endlinks. They will be reinstalled later.



Figure 2c



e) Remove the swaybar collars holding the bar to the subframe. Use a 14mm socket and ratcheting wrench. **Figure 2d** shows the passenger side swaybar collar bolts circled in red.


f) Remove the swaybar from the car.



Figure 2d

3. Install the CorkSport 2-way adjustable rear sway bar

- a) Apply grease around the inside of the bushings. Make sure to fill the ribs shown in [Figure 3a](#).

 You may re-grease the bushings after installing if you have a grease gun. This can be easily done on the car with the Zerk's fittings. However, please initially grease them before install.

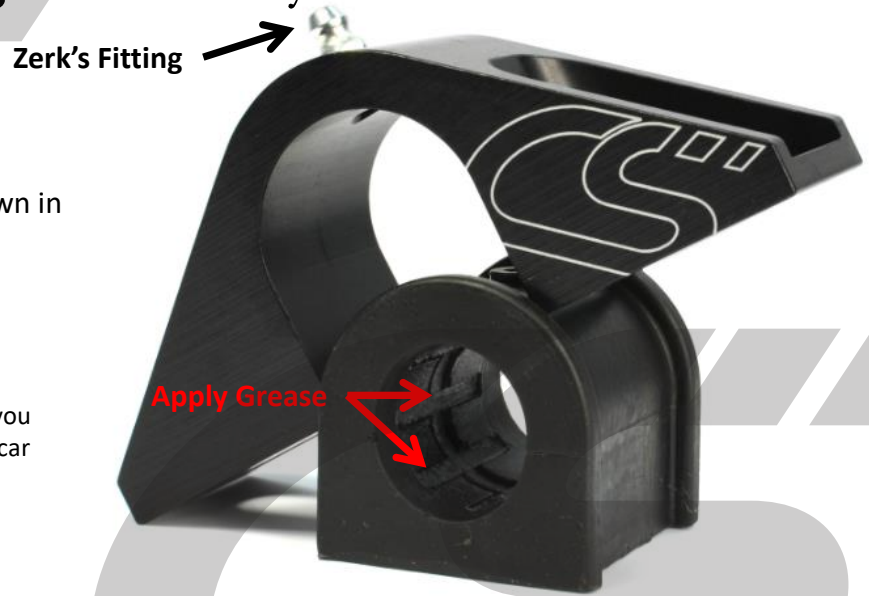


Figure 3a

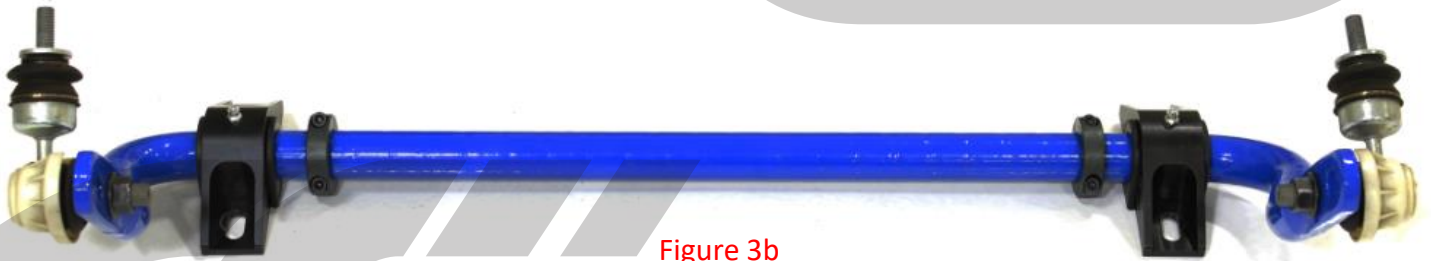


Figure 3b

- b) Assemble the sway bar brackets on the CorkSport Rear Sway bar. Refer to [Figure 3b](#) for final assembly and [Figure 3c](#) for a detailed picture.

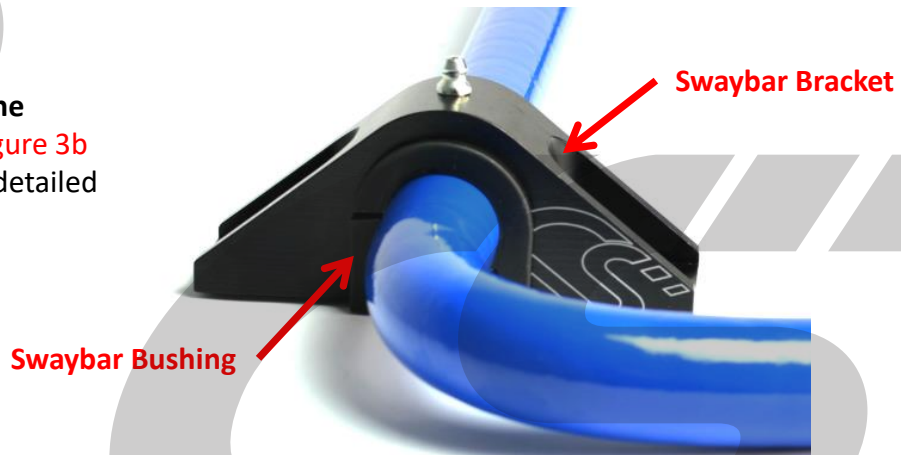


Figure 3c

3. Install the CorkSport 2-way adjustable rear sway bar continued...

- c) Assemble the sway bar collars on the CorkSport Rear Sway bar. Refer to **Figure 3b** for final assembly and **Figure 3d** for a detailed picture.



Do not tighten down the collar. Just install it to be tightened on the car later.



Figure 3d



- d) Assemble the factory endlink onto the CorkSport Rear Sway bar. There are two setting. We suggest starting on the stiffest setting as shown in **Figure 3e**. Final assembly shown in **Figure 3b**.

Less Firm

More Firm

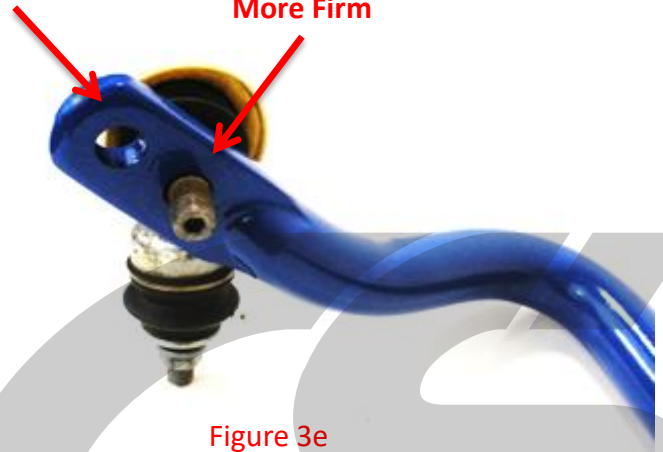


Figure 3e

3. Install the CorkSport 2-way adjustable rear sway bar continued...

- e) Put sway bar into approximate mounting location and reinstall the four bolts for the sway bar brackets removed earlier. Center the bar and tighten the bolts to 50 ft-lbs. Bolts are shown in red circles in Figure 3f.



Figure 3g

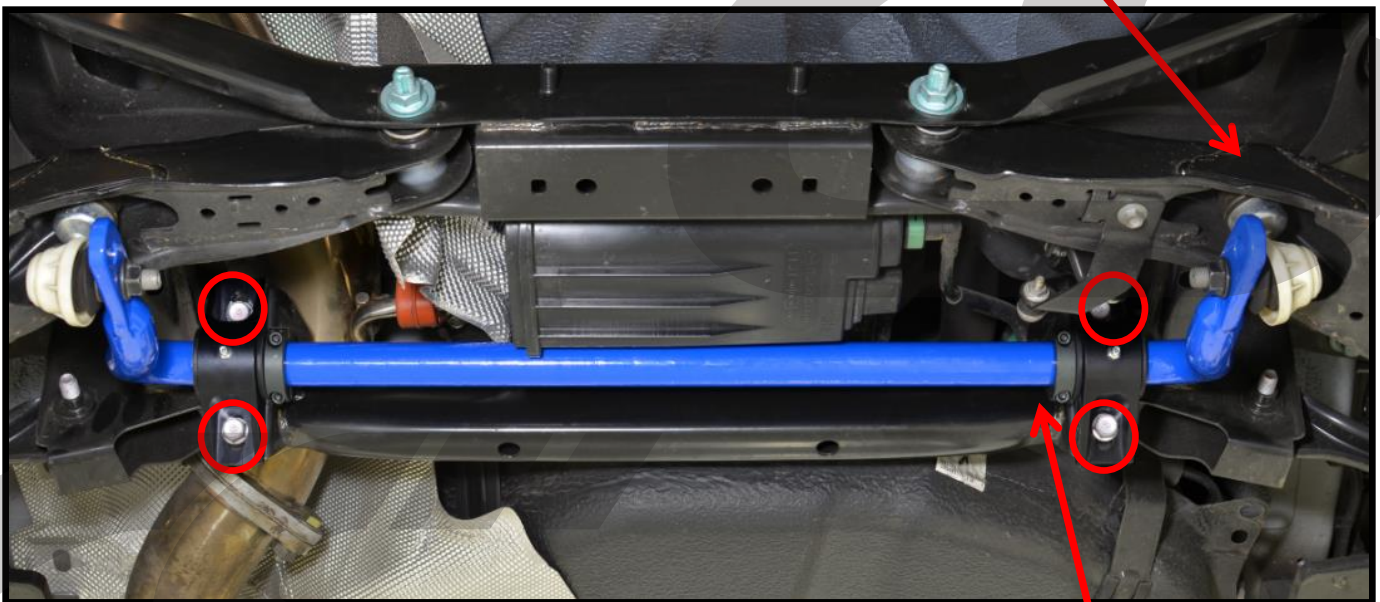


Figure 3f

- f) Re-install the endlink into the upper hole in the control arm. Tighten to 40 ft-lbs. Final assembly shown in Figure 3g.

- g) Push the sway bar collar over until it touches the sway bar bushing. Tighten to 5-8 ft-lbs with a 3mm Allen. Figure 3h shows the collars installed tightly against the swaybar bushing.



Figure 3h

3. Install the CorkSport 2-way adjustable rear sway bar continued...

- e) Tighten the lower endlink attached to the CorkSport sway bar. Tighten to 40 ft-lbs. Final assembly shown in [Figure 3i](#).



Figure 3i

- f) Re-install sub-frame brace from step 2a using a 14mm socket and wrench. Refer to [Figure 2a](#) for reinstallation.

- g) Remove the car from the jack stands / lower lift



This completes the installation of your CorkSport 2-Way Adjustable Rear Sway Bar. Take your vehicle for a test drive and adjust the stiffness of the bar if needed. Enjoy!

What's Next:

Reduce the throw of your shifter and improve precision and performance. Improve your shifting times and shifter feel with the CorkSport Mazda 3 Short Shift Plate Kit. Providing a 33% throw reduction, the CorkSport Mazda 3 Short Shift Plate is designed for spirited driving and will reduce throw while keeping the height of the OEM shifter unchanged.

<http://www.corksport.com/corksport-mazda-3-short-shift-plate-kit.html>



Get improved handling and road feel while maintaining a comfortable ride with the CorkSport Rear Motor Mount for Mazda 3. Designed as a direct OEM replacement, the CorkSport Mazda 3 Rear Motor Mount maintains OEM fitment while adding a large urethane thrust surface for added stiffness and improved driver responsiveness.

<http://www.corksport.com/corksport-mazdaspeed-3-mazda-3-race-rear-motor-mount.html>

Get optimal flow and minimal back pressure with the a CorkSport Mazda 3 Power Series Exhaust for the 2010+ Mazda 3.

Gain extra power while improving the sound of your car with a Cat Back Exhaust system. Available in both 2.0L and 2.5L versions you will notice a power increase that is accompanied by the awe inspiring growl of a CorkSport exhaust.

Get the 2.5L Version Here:

<http://www.corksport.com/corksport-power-series-exhaust-system-mazda-3-2.5.html>

Get the 2.0L Version Here:

<http://www.corksport.com/corksport-power-series-exhaust-system-mazda-3.html>

