

# CorkSport Mazda3/Mazdaspeed3 Eyelids

20010+ Mazdaspeed 3 and Mazda3



Thank you for purchasing the CorkSport Eyelids. Give your car a more aggressive, sporty appearance with the CorkSport 2010+ Mazda/Mazdaspeed 3 eyelids. Made from ABS plastic gel-coat and sold as a pair with 3M double sided tape, this simple to apply enhancement will give your headlights and your car an updated look.

## Pre-Installation Notes:



**Make sure your vehicle is completely cooled down** prior to starting installation. If you are going to work on your car within an hour or two of having driven it, use a fan to cool off the car.



**These instructions were written for reference only** and the use of a factory service manual is recommended. Please read these instructions thoroughly prior to starting installation



**How our instructions work:** To best cover all of our customers experience levels, we have included a step-by-step instructions for customers that require additional detail.



**These installation instructions were written using a 2010 Mazdaspeed 3.** Other year Mazdaspeed3 models will be similar.

## Materials and Time:



**General Info.**  
Part #: Ax1-8-058  
Time Est: 0.5 hours  
Wrench Rating: 1/5



**Supplies Needed for Painting**  
600 and 900-1000 Grit sand paper  
Primer  
Base Color Paint  
Clear Coat  
Prep cloth  
Gloves  
Rubbing Alcohol  
Body Filler (Optional)



**Parts List**  
One (1) pair of eyelids  
3M Double Sided Tape


Need Help With Your Installation?  
Call (360) 260-CORK


## Detailed Instructions

 These instructions are made for 2010 Mazdaspeed3. Mazda3 and other years will be similar.

### 1. Pre-fit the Eyelids to the Car

a) **Open the hood and test fit the eyelids** before installation to ensure perfect fitment. Some of the ABS can be trimmed for a unique or better fitment.

 If painting the eyelids, be sure to get them painted prior to final installation as it is difficult to remove them. When reinstalling the eyelids you will need to purchase new adhesive mounting tape.

 It is Highly recommended that you prep and paint the eyelids prior to installation for a better finish. At the end of the instructions are general painting instructions if you would like to paint them yourself.

### 2. Clean The Headlights

a) **Remove the eyelids and clean the contact area on the headlight** and eyelid with rubbing alcohol to make sure there are no oils present which could affect the ability of the 3M adhesive to properly secure the eyelid to the headlight assembly.

### 3. Adhere the Eyelids

a) **Adhere the 3M tape to the eyelids as shown in Figure 3a.**

Be sure that the tape is secure against the eyelids as shown in **Figure 3a**. This is important to ensure proper attachment to your headlights. It is important to get good adhesion which may require heating up the surfaces to room temperature.



Figure 3a

b) **Remove the red backing from the 3M adhesive tape and firmly press the eyelid against the headlight.** Repeat this process for the other side. Be very sure you are placing the eyelids in the correct position and on the correct side. Final fitment shown in Figure 3b and Figure 3c



Figure 3b



Figure 3c

 **This completes the installation of your CorkSport Eyelids. Check out our [knowledgebase](#) for additional install information**

Need Help With Your Installation?

Call (360) 260-CORK

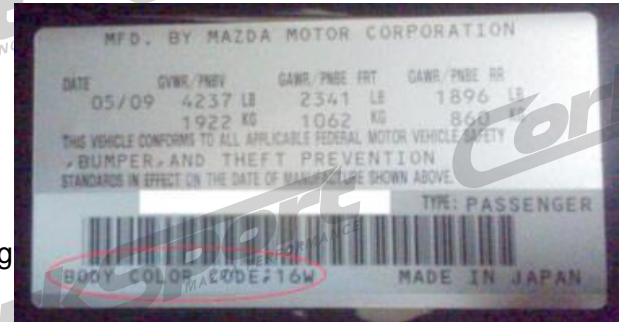
## Detailed Instructions

### 1. Prepping your parts to paint



**TIP:** Painting your eyelids yourself can save you a decent amount of money and result in near professional quality finish. Plus, if you mess up, just sand the paint off and try again!

First you will need to get your paint code. It is located in the driver's door jam. Shown **Figure 1a**. We sourced our paint from [Paintworld](#) online. We got a kit that contained everything we needed to paint the eyelids.



**Figure 1a**



#### A bit about paint options:

You have two options for paint. You can go with a single-stage paint or a two-stage (basecoat/clearcoat) paint. We have found that using a basecoat/clearcoat paint produces the best results.

Single stage paint means that the color and the clear are sprayed in one application. This method is good but does not always produce a shine that matches the car from the factory (factory paint is usually two-stage).



**Figure 1b**

A base coat/clear coat is just what it says. There is a base coat that is sprayed on then the clear is sprayed on over the top of that for the final stage. This method produces the best shine and a stronger finish much like the factory. **Figure 1b** shows supplies for Base coat/clear coat.

- a) First, prep the eyelids by sanding and filling any small imperfections. As with most any ABS parts, there can be a defect or two in the surface. Depending on how deep the scratch or defect might be, you may need to use a little body filler. Be sure to only use enough to fill the defect area or you will have a bump in your eyelid that may not be visible until you paint. After filling is done sand the whole eyelid with a 600 grit sand paper so there is no shine to the surface. You just need to scuff up the surface, it helps the primer adhere.
- b) Next, use an alcohol cloth or paint prep cloth to clean the surface of the eyelid. Spray on a coat of primer. It's best to do two light coats, allowing a few minutes between each coat.
- c) After the primer has dried, lightly sand the surface with 900-1000 grit sand paper to get rid of and bumps and/or orange peel.



**Figure 1c**

Next, clean the dust off the surface with a lint free towel or paint prep cloth. Do not use an alcohol wipe on the primer, you should use a sticky prep cloth. Final prep shown in **Figure 1c**.

Need Help With Your Installation?

Call (360) 260-CORK

## Detailed Instructions

### 2. Paint Eyelids



If you have not already, check fitment of the eyelids on each headlight to make sure it is satisfactory.

- a) Make sure the paint is well mixed in the can before applying it to the eyelids. Apply the color in very light coats, 3-5 coats is best. It's best to do light coats to make sure you cover the eyelids and do not have running of the paint.



If using two-stage paint, the eyelids will look matte in color before the clear coat is applied. Shown in **Figure 2a** before clear coat is applied.



Figure 2a

- b) The last step for two-stage paint is the clear. Make sure that the clear you are using is compatible with the type of base coat paint you are using. Most of the time using the same brands is best.



Depending on what type of clear is used, you will need to wait 30 minutes or as much as 3hrs after applying the base coat, before applying the clear coat. This information can normally be found on the can. Just like the base coat, it is best to do this in a few "mist" coats, allowing 5-10 minutes between coats. A number of coats (4-5) may be needed to get the desired shine. Allow the clear enough time to dry before installing the part. Final part is shown in **Figure 2b**. Repeat process for second side or additional parts.



Figure 2b

**!** This completes the instructions for painting ABS parts. Check out our [knowledgebase](#) for additional install information