

INSTALLATION INSTRUCTIONS



CORKSPORT IWG Turbo Blanket

CST4 & CST5

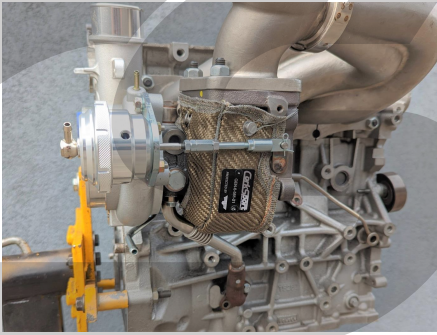
PART #: GEN-6-581-10

Need Help With Your Installation? Call (360)260-CORK



*We absolutely, positively,
deliver - every time.*

CORKSPORT.COM



CORKSPORT IWG Turbo Blanket


CST4 & CST5

PRODUCT DESCRIPTION:


Thank you for purchasing a CorkSport IWG Turbo Blanket for your CST4 or CST5 Turbo. The addition of the CS IWG Turbo Blanket gives a noticeable decrease in under hood temps, while also helping to increase turbo spool for a more responsive setup!


Please let us know your feedback on the CorkSport IWG Exhaust Blanket by submitting a review at:
<https://corksport.com/>


PRE-INSTALLATION NOTES:


 Make sure your vehicle is completely cooled down prior to starting installation. If you are going to work on your car within an hour or two of having driven it, use a fan to cool off the car.

 Ensure you have no oil leaks around the turbo as this could cause a fire hazard after the blanket is installed.

 **NOTE** If you already have a CST4 or CST5 installed with the turbine heatshield, the heatshield will need to be removed before the installation of the turbo blanket.

 **NOTE** You may need to jack up your car to access to bottom of the turbo. Verify that the car is on a level surface before proceeding. Use appropriate load rated jack stands to support the vehicle.

 **NOTE** The install is shown on an engine out of the car for clarity, installation in the car is identical. These instructions were written for reference only.

 **NOTE** How our instructions work: To best cover all of our customers experience levels, we have included a table of contents/order of operations along with step-by-step instructions.

MATERIALS & TIME:

GENERAL INFO:



Time Est:
1.5hr



Difficulty:
2/5



CEL:
No



Warranty:
2-Year

PARTS LIST:

- One (1) CorkSport IWG Turbo Blanket
- One (1) Stainless Steel Wire Coil
- One (1) Stainless Steel Spring

TOOLING LIST:

- Needle Nose Pliers



ORDER OF OPERATIONS & TABLE OF CONTENTS:

 **IWG TURBO BLANKET SETUP** Pg. 4
Section 1: Setting up the IWG Turbo Blanket

 **IWG TURBO BLANKET INSTALLATION** Pg.5-9
Section 2: Installing the IWG Turbo Blanket



DETAILED INSTRUCTIONS:

1. Setting up the IWG Exhaust Blanket

! Before handling the blanket make sure to use gloves and use caution, as there may be metal wire protruding from the stitched edges that is sharp.

- a) Install the stainless steel spring on the IWG turbo blanket in the location circled in **Figure 1a** by placing the end with the smaller loop over the button rivet.



Figure 1a

DETAILED INSTRUCTIONS:

2. Installing the IWG Turbo Blanket

- a) Install the turbo blanket in the configuration shown in **Figure 2a** and in the pictures on the following pages. The logo plate will be orientated as shown when properly installed.

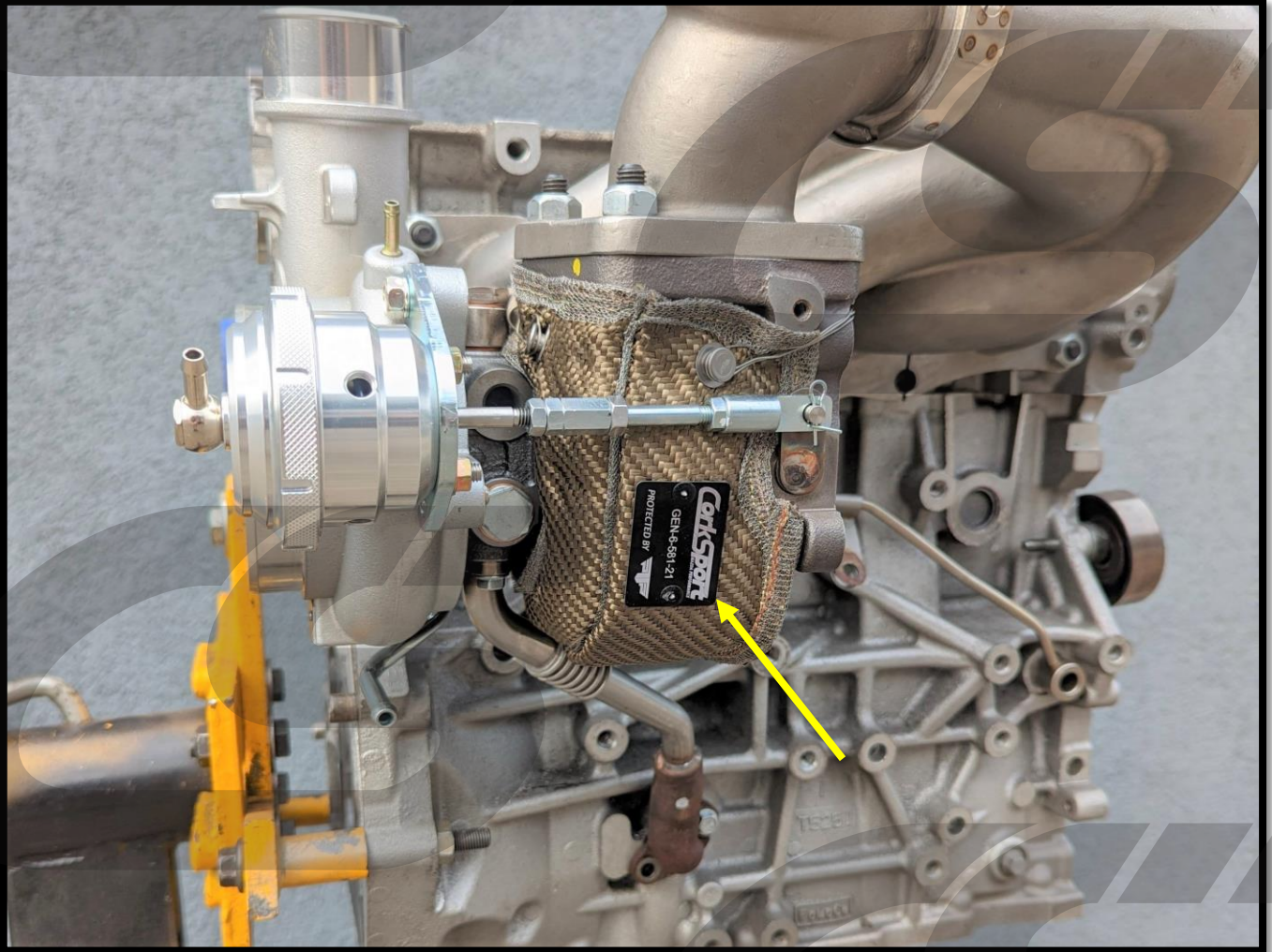


Figure 2a

DETAILED INSTRUCTIONS:

2. Installing the IWG Turbo Blanket (Cont.)

- b) Attach the spring shown in **Figure 2b** to the button rivet circled in yellow by using needle nose pliers to grab the loose end of the spring and pulling it onto the rivet.

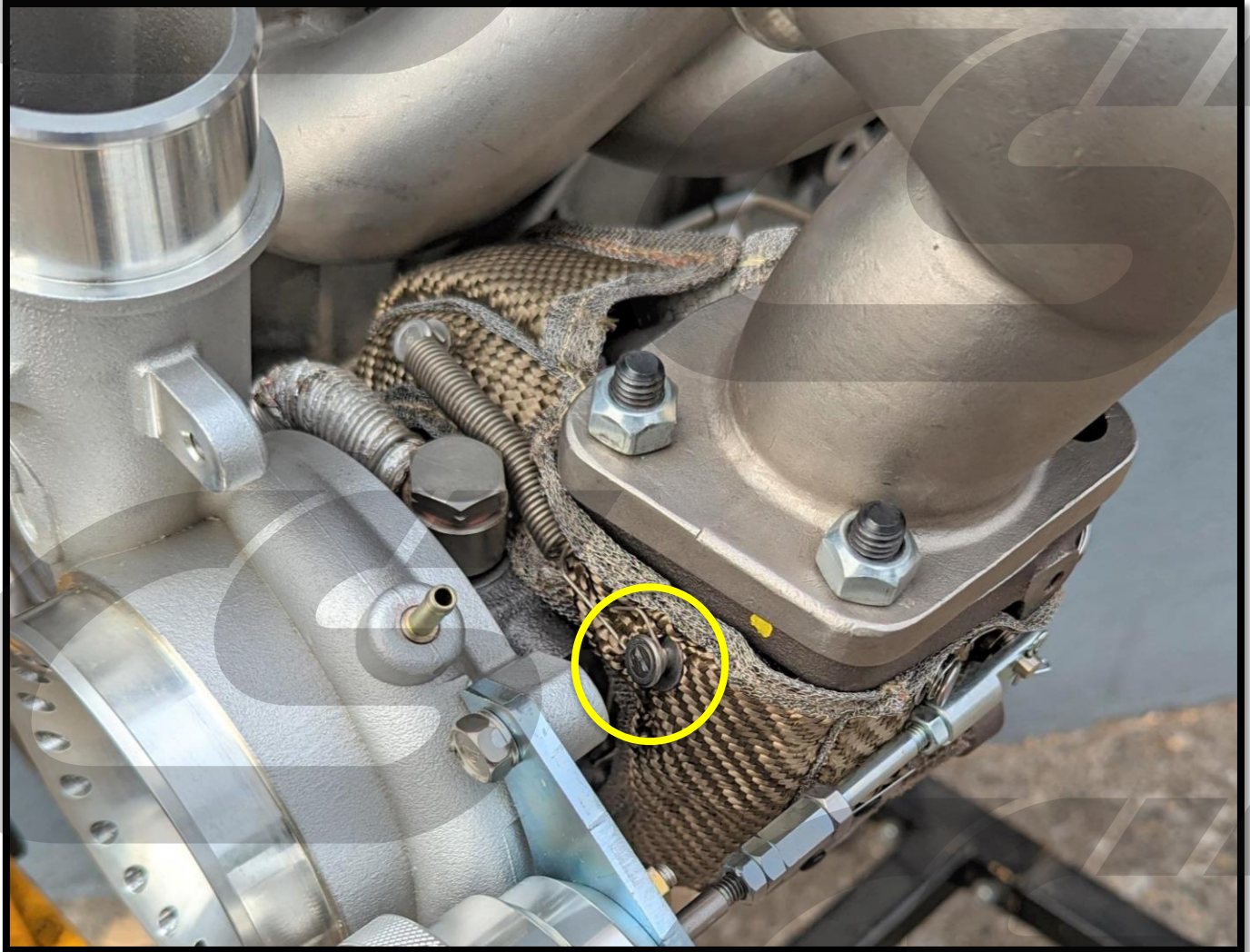


Figure 2b

DETAILED INSTRUCTIONS:

2. Installing the IWG Turbo Blanket (Cont.)

- c) Locate the included stainless steel wire and make a loop in it as shown in **Figure 2c** that is large enough to fit around a button rivet.

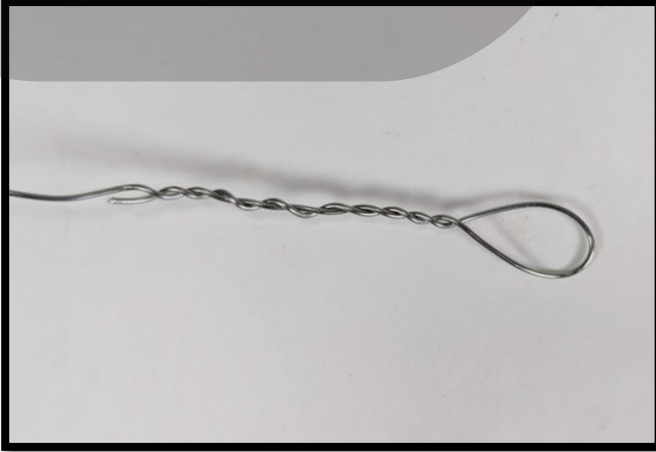


Figure 2c

- d) Place the wire loop around the button rivet shown in **Figure 2d**.

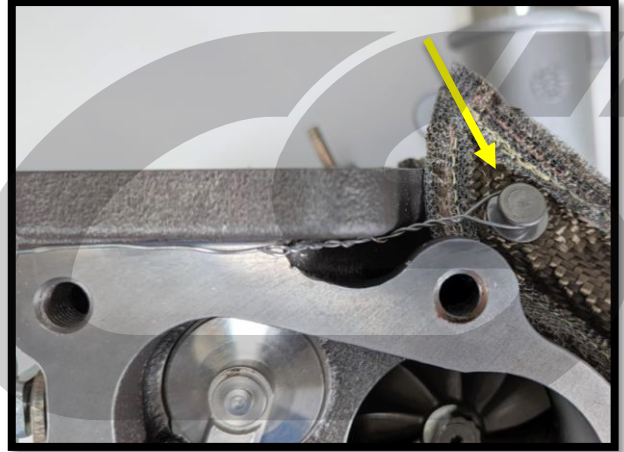


Figure 2d

- e) Wrap the wire around the opposite button rivet shown in **Figure 2e**. Once it is wrapped around pull the wire snug so the blanket is secure.

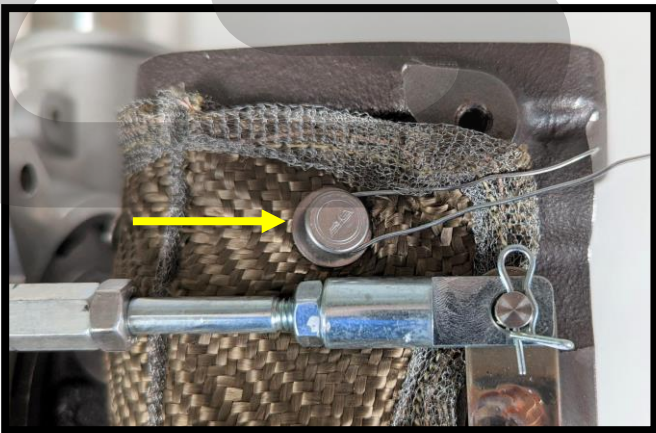


Figure 2e

- f) While maintaining tension on the wire, wrap it back around the first button rivet as seen below in **Figure 2f**.

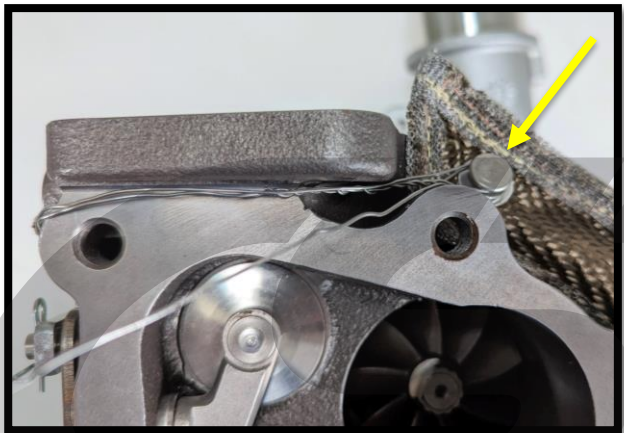


Figure 2f

DETAILED INSTRUCTIONS:

2. Installing the IWG Turbo Blanket (Cont.)

- g) Wrap the wire back around the second button rivet as seen below in **Figure 2g**, ensuring that tension is kept on the wire.

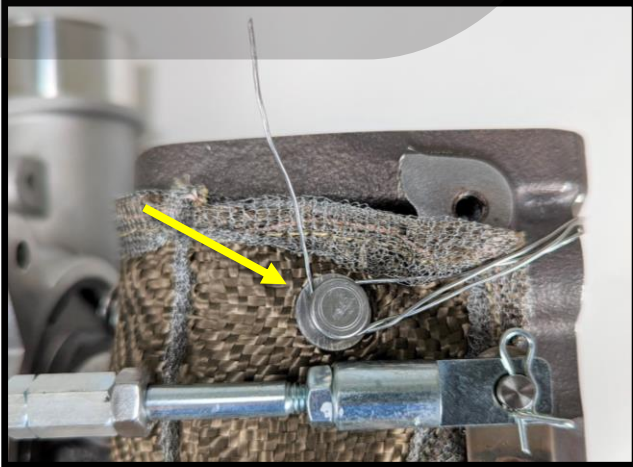


Figure 2g

- h) Wrap the wire around the rivet a couple more times to secure it and cut off any excess wire. Tuck the end of the wire under the rivet as shown in **Figure 2h**.



Figure 2h

- i) Ensure that the wire is run up and out of the way of where the downpipe flange is located as seen in **Figure 2i**.

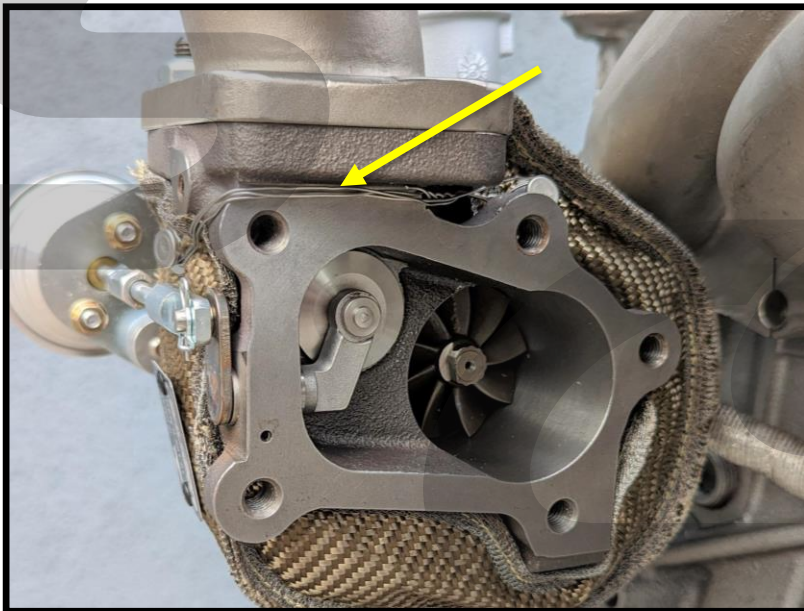


Figure 2i

DETAILED INSTRUCTIONS:

2. Installing the IWG Turbo Blanket (Cont.)

- j) After the spring and wire have been attached to their respective places, the blanket may need to be adjusted to achieve desired fitment as seen in **Figure 2j**.



Ensure that the wastegate rod can operate freely and does not come in contact with the button rivet shown below.

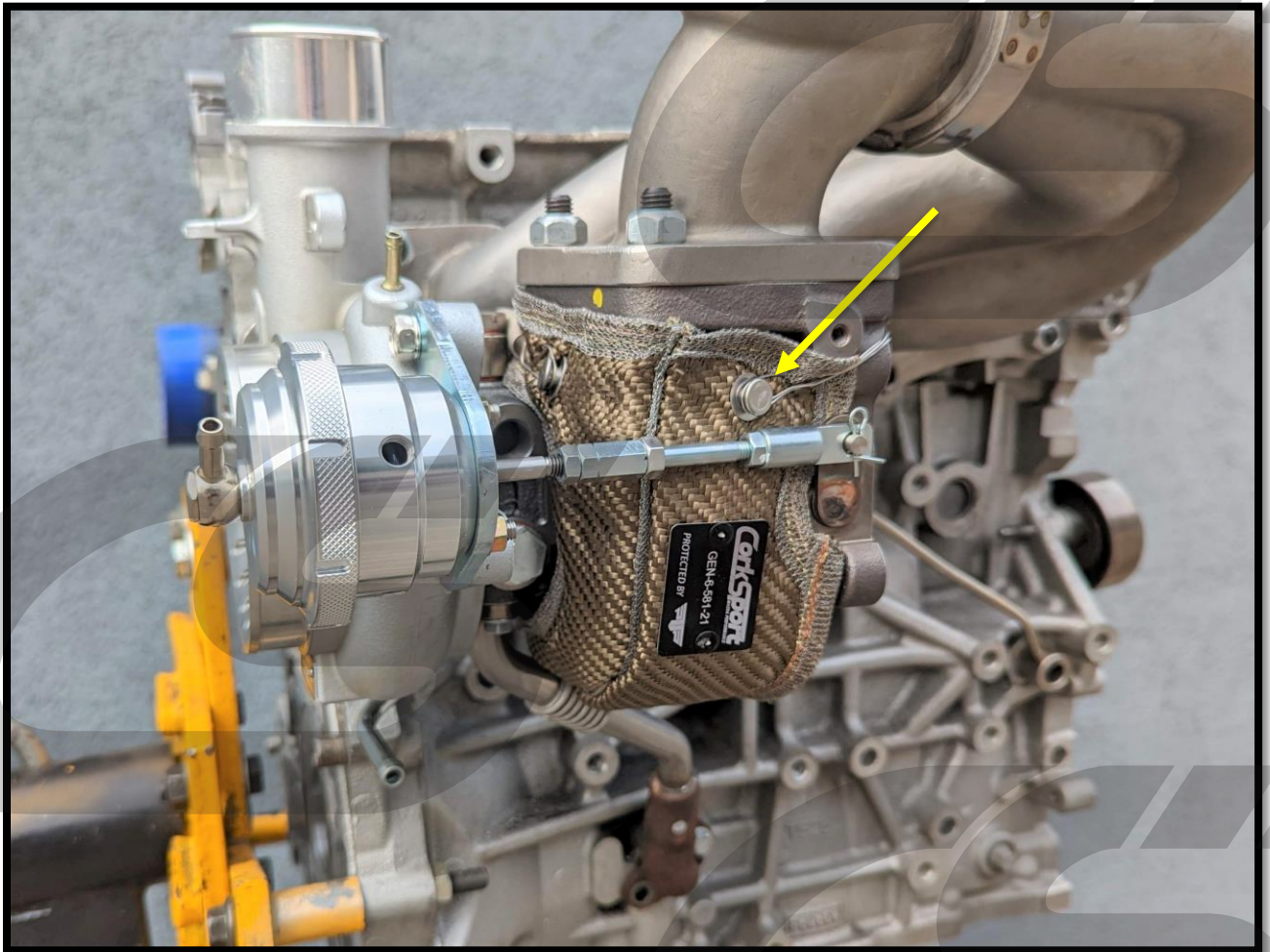


Figure 2j



This completes the installation of your CorkSport IWG Turbo Blanket. Enjoy the cooler engine bay temps and better turbo response!

WHAT'S NEXT?

CorkSport 3.5 Inch Intake

Ready to take your Mazdaspeed 6 to the next level and remove any upstream turbo restrictions then you have found one of the best options, our 3.5 Inch Intake. When aiming for higher power levels you will exceed the MAF sensor flow with smaller air intakes and need a larger intake to feed your speed engine all the air it wants. The CorkSport 3.5" Intake combines the ease of use of smaller intakes with enough flow to support ~700 WHP. Also available in 3 Inch and 4 Inch sizes!



CorkSport Camshafts

The CorkSport Mazdaspeed Performance Camshafts are developed with the latest design, manufacturing, and casting technologies and ground to CNC precision for the best performance for your Mazdaspeed. Near factory idling cams for the daily driver and even the aggressive track driver bringing improvement in throttle response and torque to your Mazdaspeed.

CorkSport CST5 Turbocharger

Not too big, not too small. ITS JUST RIGHT for YOUR SPEED. Capable of built block power and extremely fast spool times, this turbo can make 500+whp and hit 20psi by 3500-3600rpm. The CorkSport CST5 turbo can be tuned for a more laid-back curve that is stock block safe or pushed to 30+ psi for built blocks and auxiliary fueling. No matter what build you have this turbo will be sure to impress. The CST5 features a MHI Journal Bearing CHRA, 0.82 Turbine A/R and 4" Anti-Surge Compressor Cover

The CST5 turbo is available in two boost control setups: Internally Wastegated (IWG) & 44mm Externally Wastegated (EWG) w/included EWG elbow pipe & V-band clamp. Ball bearing option coming soon as well!

Includes a FREE CorkSport 3.5 bar MAP sensor for accurate boost pressure up to 37psi.

